

Autism SA's Tonsley Office Accessibility Guide



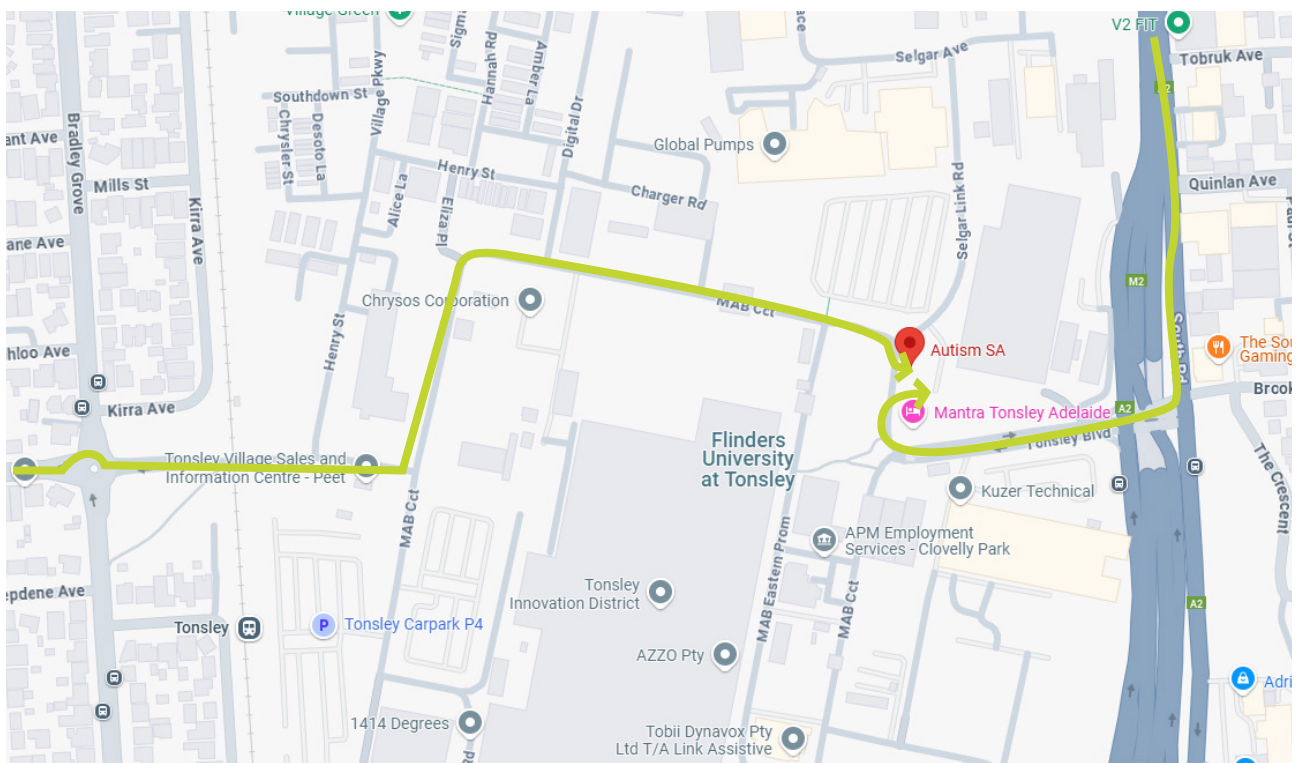
Welcome to Autism SA's Tonsley Office

At Autism SA we are committed to providing an inclusive and accessible environment for people visiting our space. This guide outlines key information to help people navigate to the Tonsley office and anticipate potential sensory, communication or physical barriers. If there are any barriers that you identify through reviewing our Accessibility Guide, we encourage you to discuss these with us.

Getting to Autism SA's Tonsley Office

Level 1, 6-8 MAB Circuit Tonsley SA 5042.

Autism SA's Tonsley office is located in the Tonsley Innovation District. Please follow this guide to help you navigate to the office.



Public transport

Bus stops and train stations are within 1km of the building.



Stop 23 South Road bus stop
(350 metres)



Tonsley train station (750 metres)

Source: tonsley.com.au

For more information on how you can get to and from Tonsley visit:
tonsley.com.au/getting-to-and-from-tonsley/

Car parking on site

There is limited car parking onsite and around the Tonsley Innovation District.

Underneath the office building is a small carpark with 2 disabled parks and 8 visitor parks. The visitor parks are labeled with yellow text on the ground. Visitors can park in these visitor parks until 5:15pm.



Parking under the building.



Disabled car park.

Other car parking in Tonsley

If the car park is full please park in a different car park within the Tonsley Innovation District. Please allow 10-15 minutes to walk from a car park to the Autism SA building as the District can be busy.

The **blue lines** on the map show the free street parking at Tonsley. If you cannot find a park please call Reception (08) 8379 6976.



Arriving at the office

The office building can be entered from the carpark and from MAB Circuit. Both entrances have ramp entry options, there are many ways access the building to get to Level 1.



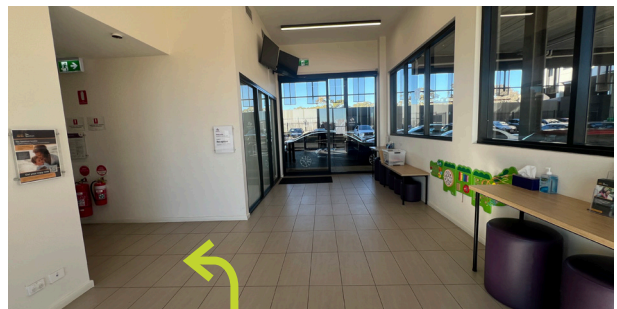
This is the front of the building.



You can use the stairs or the ramp to enter the building.



Enter through the door.



Once you have entered turn left to access the toilet, sensory room, stairwell and elevator.



If entering from the carpark, turn right to access the toilet, sensory room, stairwell and elevator.

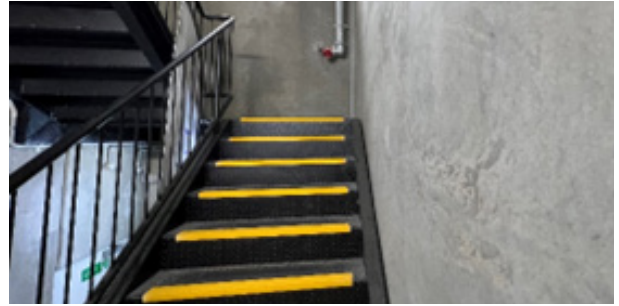


This area includes access the toilet, sensory room, stairwell and elevator.

If going to level 1 please press the elevator button and wait for the elevator to open.



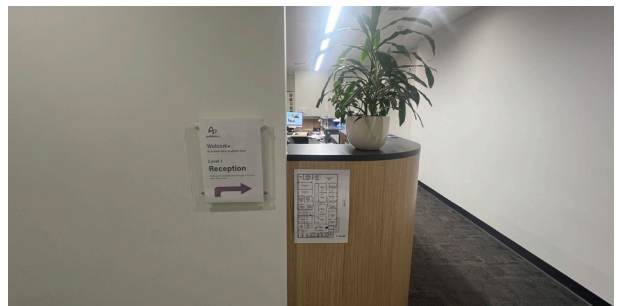
You can choose to use the stairs.



The sounds in the stairwell can be loud and give an echo. Walk up the stairs, past the Mezzanine, to get to level 1.



If using the elevator please press the level 1 button.



When you exit the elevator or the stairs this is what you will see. Turn left to access the toilets. Turn right to access reception.

Accessibility

The elevator will be the best option if you use a wheelchair or mobility aid.

The ramp at the front of the building creates a incline. The floor in the building is a even surface.

The sensory room

At anytime you can use the sensory room. The sensory room is a space to support regulation and to take a break.

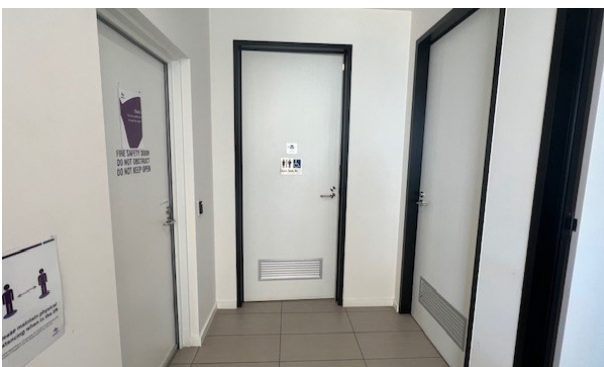


You may hear sounds in the sensory room such as:

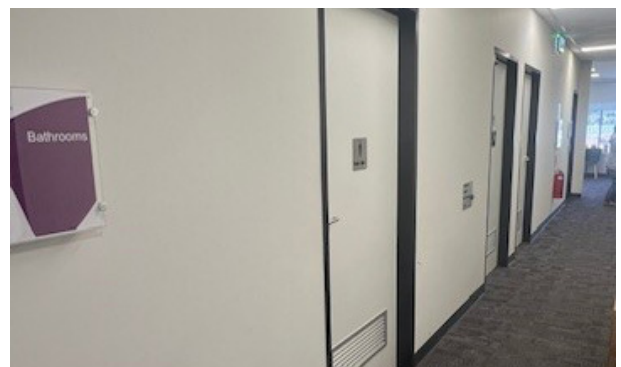
- Noise of the bubble tube
- Flick sound of the light switches
- Movement of objects on the play wall
- People talking
- Elevator sounds

Toilets

You can go to the toilet at anytime. Toilets are located on Level 1. Accessible toilets are located on ground level and Level 1.



Accessible toilet on ground level.

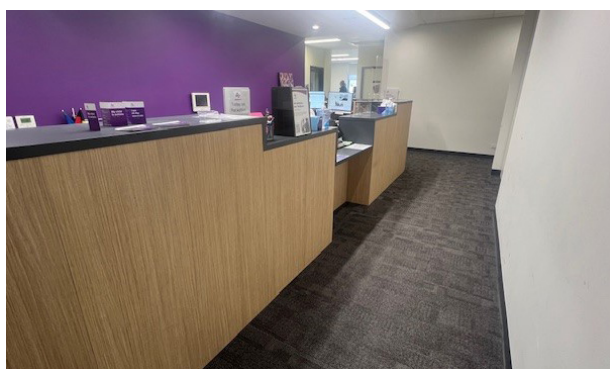


Toilets on Level 1.

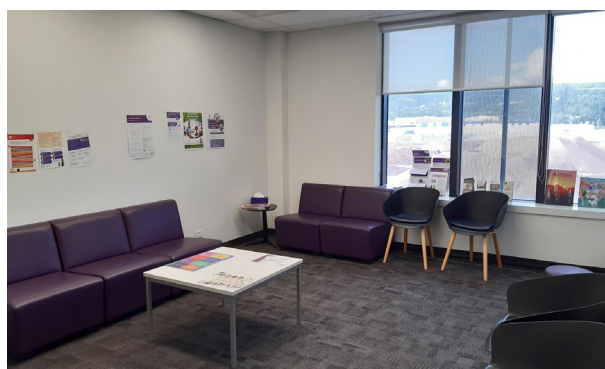
Reception area

When you arrive at Level 1 you will see a reception desk. If there is no one at reception please wait in the waiting room until there is a person at the desk.

The staff at reception will help you sign in using the log in system, Sine system. You will need to communicate your name and why you are visiting Autism SA.



Reception area



Waiting room

Once you have signed in you can wait for a staff member to meet you.

In the reception and waiting area you may hear

- Noise of a TV
- Door sounds (beeps, opening)
- Talking and movement of other people
- Typing / office environment sounds
- Radio with music playing

You might smell:

- Food
- Coffee and other drinks

Lighting includes:

- Bright strip lighting on the roof
- Spotlights over the reception area

The floor is compacted carpet. The floor is an even surface. The seats are cushioned stools or plastic chairs with a hard back surface.

Contact information

If you have any questions or require additional accommodations or adjustments based on this information, please contact us to discuss:

Phone number: 08 8379 6976

Email: contactus@autismsa.org.au