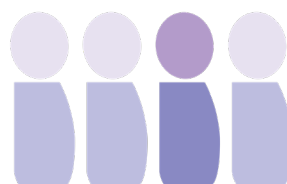


Access and Inclusion for the Autistic Community

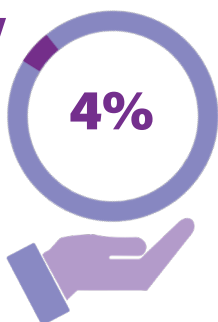
Did you know:



People are autistic,
That's **290,900** Australians. **1 in 4** people have an autistic relative.¹



Only



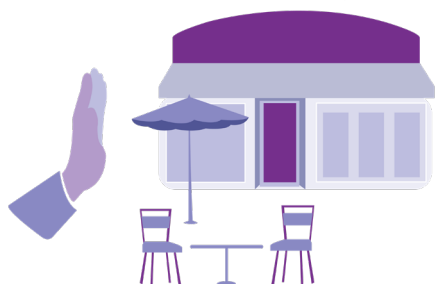
of autistic people believe businesses know how to support them.³

People with a disability were three times as likely to avoid a business,

and twice as likely to tell other people to avoid a business, because of negative experiences.⁴



of autistic people and their families avoid going to venues like pubs and bars.⁵



Sources:

- 1. Australian Bureau of Statistics. (2022). Disability, Ageing and Carers, Australia: Summary of Findings. ABS. <https://www.abs.gov.au/statistics/health/disability/disability-ageing-and-carers-australia-summary-findings/latest-release>
- 2. Jones, S. Akram, M. Murphy, N. Myers, P. & Vickers, N. (2018) Australia's Attitudes & Behaviours towards Autism; and Experiences of Autistic People and their Families Autism and Education. Rese
- 3. Deloitte, Australian Human Rights Commission. (2017) 'Missing Out: The Business Case for Customer Diversity'. (Online- <https://www.deloitte.com/au/en/services/consulting/perspectives/business-case-customer-diversity.html>)
- 4. Deloitte, Australian Human Rights Commission. (2017) 'Missing Out: The Business Case for Customer Diversity'. (Online- <https://www.deloitte.com/au/en/services/consulting/perspectives/business-case-customer-diversity.html>)
- 5. Australian Catholic University. (2020) 'Summary of results from consultation survey, to inform a submission into the Federal Senate Select Committee on Autism'.