

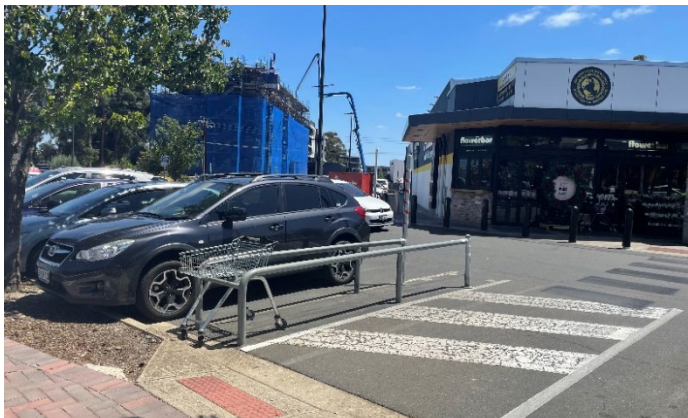
# Arkaba Hotel Accessibility Information

## Getting to the Arkaba

The main entrance into the Arkaba is next to the carpark and opposite Frewville Foodland.



The view from across the road



The view from the Arkaba entrance

When you walk through the main entrance you can walk straight, which will lead you into the hotel lobby. Or you can walk down the side entrance to the Gaming room and Osmond room. If you walk into the hotel lobby, there will be a desk there with staff members. You can ask them for help. You don't have to interact with them if you don't need help, but they may smile and say hi.



The reception

## Inside the Arkaba – Bistro area

If you walk through you will be in the bistro area of the Arkaba.

There is a variety of light sources in the bistro. There is a significant amount of natural light from the windows.

Lighting used:

- overhead lights used sparingly,
- warm yellow lights on the walls,
- lights hanging from the ceiling and strip lighting used on the bar.



There are a variety of seating options. Seating options often include:

- You can sit on a table with stools,
- booths with soft seating,
- tables with padded chairs or
- tables with hard chairs.

You can choose to sit anywhere, as long as the table is not being used.

When you want to order, you go to the bar and pay for your order. You will need to say what number table you are sitting on. What you order will be brought out to you later.

There is spacing between tables so you are unlikely to be bumped into.

There is carpeting in the bistro, so you will not hear any footsteps or chair scraping noises.

### **Sitting near the bar**

If you sit near the bar, you will likely hear plates and glasses being picked up and put down repetitively. There are speakers on the bar playing music at a moderate level.

### **Sitting near the window**

If you sit facing the window, you might see cars going past outside, but no outside noise is noticeable. Sometimes the sun reflects onto cars and causes glare, like this:



### **Sitting near the kitchen**

The kitchen is semi-hidden by wooden panels. You may hear a bell being rung when a meal is ready. The smells and sounds of food preparation may be noticeable if you sit near the kitchen.

There is a small stage area which has different lighting to the rest of the bistro area.

There may be:

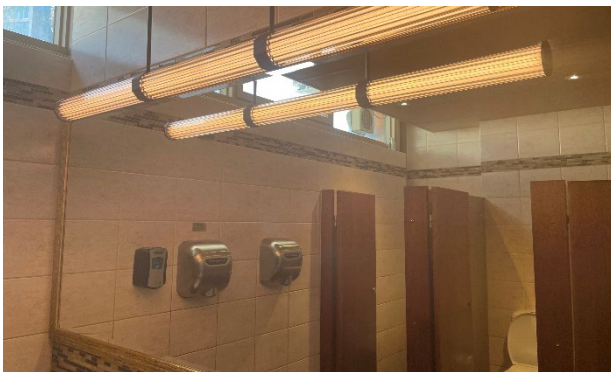
- A blue light on the stage
- A spotlight on the stage
- Musicians playing

Table 81 is a semi-private booth which is far away from other tables. The noise from the rest of the bistro is less noticeable here. There is a soft hanging light and natural light from a window high up on the wall. You may hear people walk in and out of the bistro because you are next to the door.

This is what table 81 looks like:



There are several bathrooms in the Arkaba. The bathrooms in the Arkaba usually only have hand dryers. This is the female bathroom near table 81:



### **If you are going to the Quiet Dinner:**

The Quiet Dinner will be held in the Osmond room, so you can enter through the main bistro or through the side hallway.

If you go through the hallway:

- You may hear and see the cars driving outside.
- You may hear soft music playing in the hallway.
- You may hear the gaming room, but it is not very noticeable.

When you are in the Osmond room:

- You will not be able to hear the noises from the road.
- You may see cars through the blinds.
- The lights are fully adjustable and will be set to dim
- There will be soft acoustic music playing in one side of the room.
- The doors are frosted on both sides of the room.

These are some photos of the Osmond room. The table set up may look different to the photos:

