

Marion Hotel access guide

Getting there

You can catch the M44 or 101 bus to the Marion Hotel. It will drop you off at Stop 24 Marion Rd, which is a 1-minute walk away from the venue.

There is ample carparking around the venue, and there are disability carparks.

Ordering

You can order using QR codes, or by going up to the nearest bar.

Main Entrance

As you walk in the main entrance, you will be in the lobby. You can ask an employee at the desk if you would like help, or just keep walking through.

The venue has an open-plan design, so the Garden, Dining Room and Garden Deck are all in the same large space.





The Garden

When you order at the main bar, you are given a buzzer. The buzzer will suddenly make a loud sound and vibrate. When this happens you go to the 'meal pick up area' near the bar. (What happens when people order through QR code?)

There are lots of different seating options, such as:

- Booths
- Booth seating on one side and a padded chair on the other side
- Padded low chairs with a low coffee table
- Stools at a high table
- Hard chairs at a table

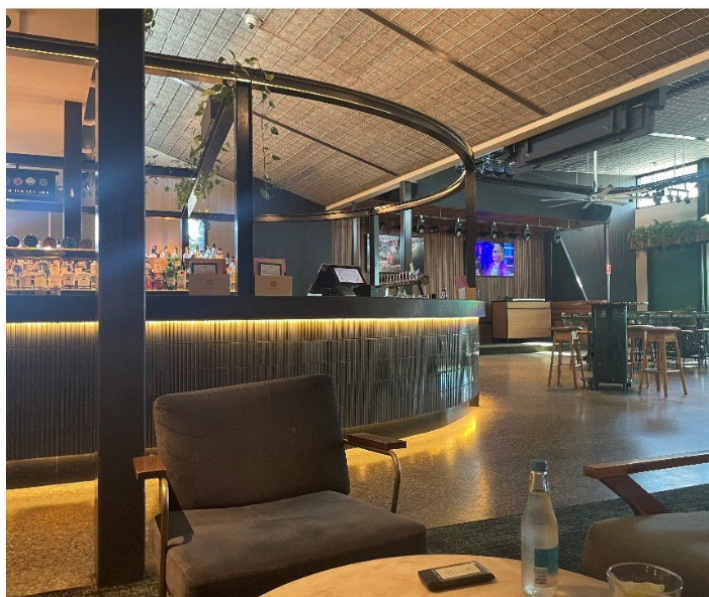
The light sources in this area are:

- Soft bulbs
- A neon pink sign on the wall
- Minimal fluorescent lighting
- Natural lighting from large windows
- Strip lighting on the bottom of the bar
- Lamps

There is a mix of carpets and hard floor.

There is a small fireplace near the bar.

There is music playing inside.



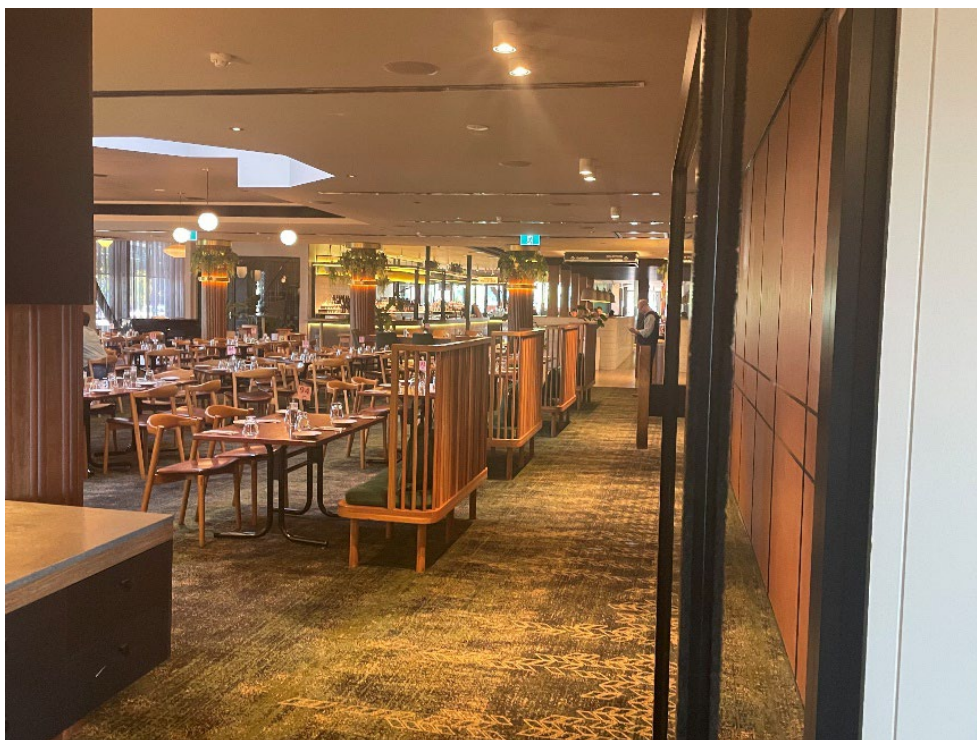
Dining Room

Because of the open-plan design, everything in the Garden and Garden deck is visible from the Dining Room.

There is a carpeted floor.

The seating options are hard single chairs or a cushioned double seat, at a table.

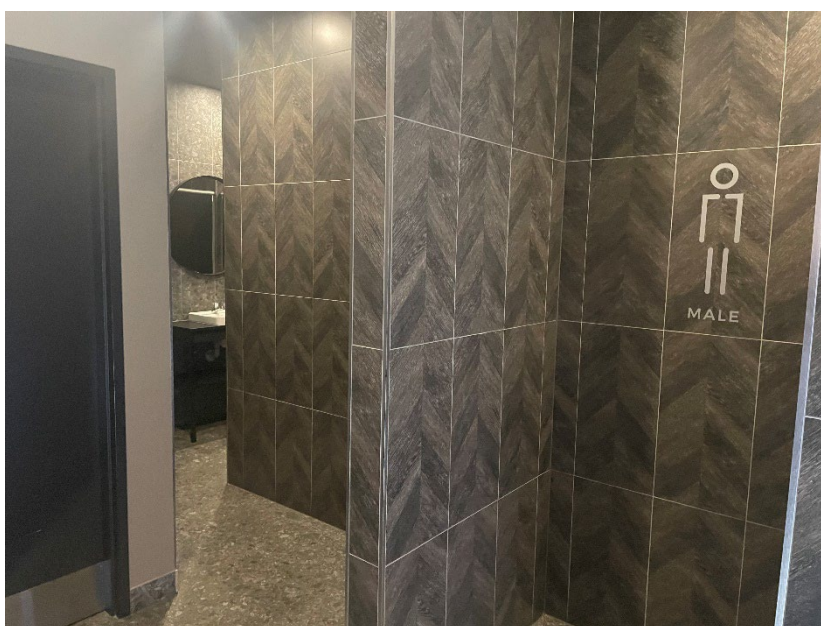
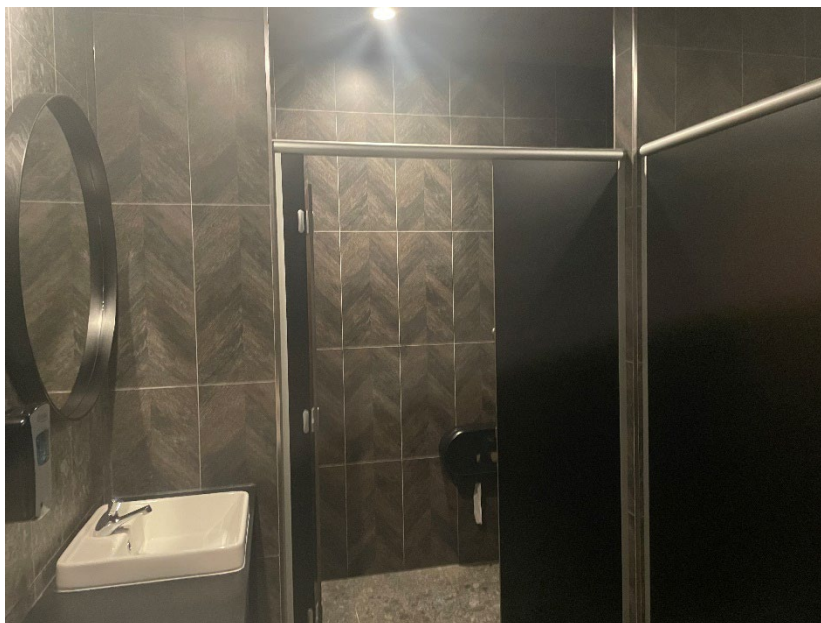
There are hanging lights and some fluorescent lights on the ceiling. There is also natural light from windows and a large skylight.



Toilets near the Terrace

There is one door for both male and female toilets. When you open the door you will see both options. There is a separate door for the disabled toilet.

There are only hand dryers available. **Check**



Garden Deck

This is a non-smoking outdoor space.

There is a large tree in the centre of the area, which provides some shade.

The seating options are:

- Hard, wiry chairs
- Padded stools
- Couches
- Booths
- A cage which doesn't move

There are some TVs on in this area.

There are large hanging lights, and lots of natural light.

You can hear some noise from outside, such as cars, in this area.

There is a small step to get onto the upper seating area.





Toilets near Smoking Area

You can find these toilets through the smoking area, or the dining room.

There are only male and female toilets.

There are only hand dryers. **Check**

